



32



36



44



48



54



70



**PERFORMANCE.  
INNOVATION.  
QUALITY.**



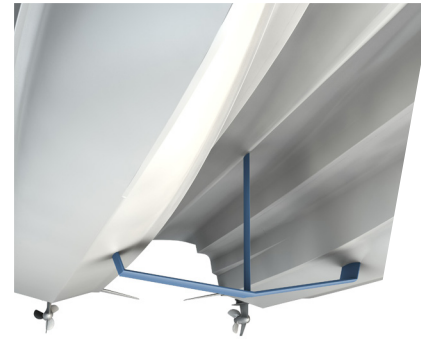


## OUR VISION

With over 40 years of manufacturing experience and the collaboration of multiple award-winning firms and designers, Aquila Power Catamarans is the world leader in producing high quality, innovation filled and exceptionally performing power catamarans. No other vessels on the planet offer more features, reliability, durability and value than our world class lineup delivers.



## INNOVATION



### AQUILA HYDRO-GLIDE FOIL SYSTEM

The Aquila Hydro-Glide Foil System, designed with catamaran and foil specialists Morrelli & Melvin Design & Engineering, enhances performance, consumption and handling. Available on the Aquila 36, the foil improves gallons per hour by up to 40% and speeds up to 25% higher than non-foiling hull designs.

### BULBOUS BOW

Aquila introduced bulbous bows when designing the Aquila 44 Power Catamaran for added buoyancy and efficiency. Scaled down from larger ocean going ships this concept improves ride and extends range.

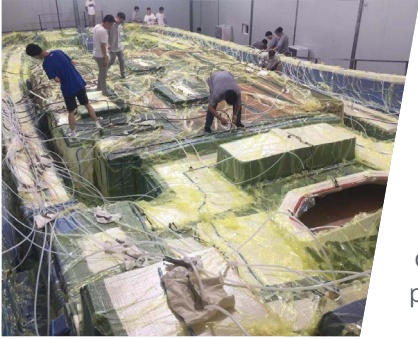


### BRIDGE-TO-BOW STEPS

Enjoy easy access to all areas of the boat with our exclusive Bridge-to-Bow Steps found on our Aquila Power Catamarans with flybridges. From the flybridge helm, captains have great sightlines for navigation but can easily get to the bow of the boat when anchoring or mooring. They also allow for more engaging social activities as everyone on board can easily join the action on the bridge from either end of the vessel.



# OUR DIFFERENCE



## INFUSI-CORE CONSTRUCTION

Vinylester resin and composite coring materials are laminated in a labor-intensive process. This utilizes numerous vacuum points, ensures resin impregnates and saturates evenly with minimal vapor or emissions. This is combined with digitally cut fiberglass and composite materials to provide exact fit and strength.



## IN-HOUSE UPHOLSTERY

Upholstery is produced in-house to ensure superior quality of materials and an exacting fit – just right for each of our models.

## MOLDED STRINGER GRIDS

Framework that supports hull strength is built in a separate mold to ensure an exacting fit and superior strength, every time. This also guarantees proper placement of tanks, bulkheads, deck joints and mechanical installations for improved overall fit and finish of the vessel.



## PRECISION CUTTING TOOLS

The use of robotic routers, computer-controlled table cutters and other precision cutting instruments provide for exact fit as well as reduced waste and weight. All these investments and efforts lead to a better finished product that performs well, lasts longer and provides owners the assurance of a solid well-built vessel.



## ENGINEERING EXCELLENCE

Mechanical components like generators, engines, watermakers, air conditioners and other miscellaneous pumps and strainers are all located behind the cabin bulkhead. This means any heat, smell or mess is maintained outside the guest cabins and salon.





32 SPORT POWER CATAMARAN



36 SPORT POWER CATAMARAN



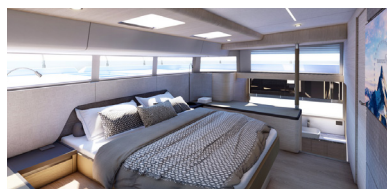
44 POWER CATAMARAN



48 POWER CATAMARAN



54 POWER CATAMARAN DEBUTING 2020



70 POWER CATAMARAN DEBUTING 2020

